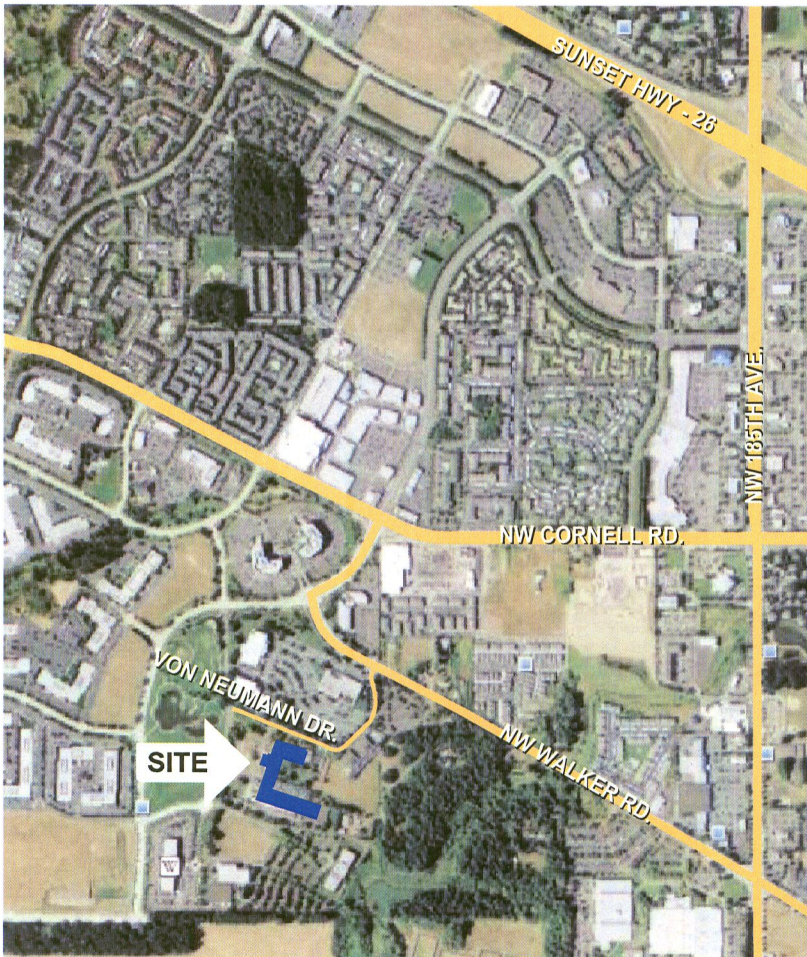


For Sublease

# OHSU West Campus

20000 NW Walker Road (off NW Von Neumann Dr.)  
Beaverton, Oregon 97007



- Office Spaces from 95 SF to 1,695 SF
- 2.3/1,000 parking ratio
- Dry & Wet Labs
- Numerous nearby amenities
- Close to Streets of Tanasbourne
- Serene, natural campus setting
- Approximately 12 miles west of downtown Portland and the Oregon Health & Science University main campus



Contact:  
Lily Ravencraft  
Real Estate Administrator  
503.748.2069  
ravencra@ohsu.edu